

NETASQ MFILTRO

HOLD THE SPAM



**How much time do you spend each day to check your SPAM folder?
How much would a business-related email loss cost you?**

SECURITY - PERFORMANCE - SIMPLICITY

The Spam Epidemic

Over the last few years, a SPAM plague has completely changed the face of email usage. Time wasted. Data lost. These problems have almost become acceptable because they are a daily occurrence. In fact, a company's productivity might be ruined by SPAMs and associated viruses.

Profitable and Efficient

NETASQ MFILTRO protects your email server and is fully transparent to your employees.

Based on 10 solid years of experience and success in building and providing security products, NETASQ has included the best available technology into a very versatile email security product range. NETASQ MFILTRO brings back increased security and productivity to your employees. It also brings email usage back to its original goal of being an effective communication tool.

NETASQ's goal was to provide the best technology available for fighting SPAM. The choice of the Kaspersky Antivirus engine guarantees that your company gets the best antivirus protection possible.

A consolidated reporting dashboard allows you to measure your return on

investment in real-time because at the end of the day, you want to ensure that your employees are productive. NETASQ MFILTRO allows you to control the SPAM plague and measure how much wasted time your company has saved.

Plug and Forget

Efficiency only matters if you can benefit from it.

At NETASQ, we strongly believe that ease-of-use is not the opposite of security. That's why every NETASQ MFILTRO model is delivered with a web installation wizard. In only a few steps, you can set up an effective email security protection for your entire company.

And because each mail matters, NETASQ MFILTRO provides a quarantine option to every employee which means they control what happens with mail identified as SPAM.

“ I installed NETASQ MFILTRO in just a few minutes. The very next morning I received several calls. Everyone said, ' I don't know what you did, but don't change anything.' Obviously, I took their advice.”

Nicolas T,
System Administrator

For more information on this product:
<http://mfiltro.netasq.com>

For more information on NETASQ and its security solutions:
<http://www.netasq.com>

BENEFITS FOR THE USER

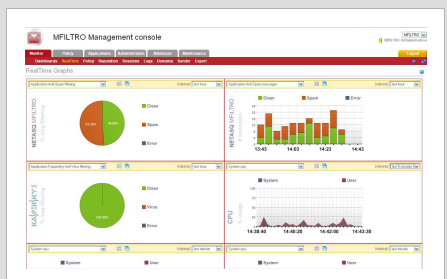
- + Immediate productivity gain
- + No mail lost
- + Manage own quarantine

BENEFITS FOR THE ADMINISTRATOR

- + Easy to install, use, maintain
- + Increase in security
- + Satisfied users

BENEFITS FOR THE MANAGER

- + Improvement in productivity
- + Decrease in risk
- + Quick, measurable ROI



Spam Protection

Protocol level protection (SMTP)	<ul style="list-style-type: none"> • Destination validity verification • Valid / invalid destinations ratio 	<ul style="list-style-type: none"> • Detection of parallel emissions (socket)
Behavioural protection	<ul style="list-style-type: none"> • Blocking of “early talkers” • Handling mass mailings 	<ul style="list-style-type: none"> • Detection of header anomalies
Protection by reputation	<ul style="list-style-type: none"> • Multiple DNS black lists 	<ul style="list-style-type: none"> • Local lists of known spammers
Heuristic mail analysis	<ul style="list-style-type: none"> • DNA signatures • Semantic analysis 	<ul style="list-style-type: none"> • Correlation of header and mail analyses • Protection against image spams
Antiphishing Antiscamming	<ul style="list-style-type: none"> • URL analyses: format and content • Dynamic URL blacklisting 	<ul style="list-style-type: none"> • Detection of bypass techniques
Analysis engine	<ul style="list-style-type: none"> • Thousands of heuristic rules • Conditional and progressive evaluation 	<ul style="list-style-type: none"> • Continuous engine updates • Immediate efficiency— no learning curve

Antivirus — Antispyware

Mailbox protection	<ul style="list-style-type: none"> • Proactive analysis engine • Archive analysis 	<ul style="list-style-type: none"> • Continuous updates • Kaspersky (optional)
---------------------------	---	--

Administration

Web Interface	<ul style="list-style-type: none"> • Step-by-step installation wizard • SSH access 	<ul style="list-style-type: none"> • Advanced filtering policy • Keyboard / screen access
----------------------	--	---

Dashboards

Statistics	<ul style="list-style-type: none"> • Usage 	
Thematic graphs	<ul style="list-style-type: none"> • Antispam — Antivirus 	<ul style="list-style-type: none"> • Real-time—by period of time
Graphical	<ul style="list-style-type: none"> • Chronological 	<ul style="list-style-type: none"> • Repartition

Services

Initial	<ul style="list-style-type: none"> • Technical support 	<ul style="list-style-type: none"> • Engine and database updates
Privilege	<ul style="list-style-type: none"> • Initial + express exchange 	

	M100	M300	M1000	M3000
FEATURES				
Active e-mail accounts	1 to 200	200 to 1000	1000 to 3000	3000 to 15,000
Antispam — Antivirus — Antiphishing	✓	✓	✓	✓
User and Administrator quarantine	✓	✓	✓	✓
Quarantine capacity (GB)	35	50	80	480
HARDWARE				
Network	2x10/100	2x10/100	2x10/100/1000	2x10/100/1000
Redundancy disk (RAID)	-	-	✓	Hot Swap